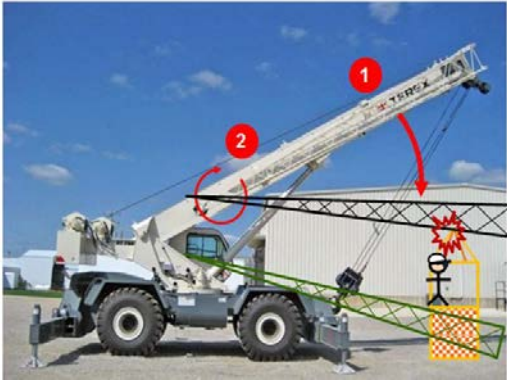


SAFETY ALERT #13.57



Dated: Wednesday, 22nd May 2013

Title: Falling Jib - Fatality



Two U-bolts securing upper attachment bracket to jib

WHAT HAPPENED?

A subcontractor employee was in the process of attaching rigging from a work basket to the load line hook of a crane owned and operated by a crane service contractor. He was positioned under the boom on a ladder affixed to the side of the work basket. The boom was in the 60 degree position and idle. The jib, weighing 3,300lbs (1,497 kg) was not in use. It was mounted in the stowed position alongside the main boom.

At the time of the accident, the upper jib attachment failed, causing one end of the jib to fall about 40ft (12 m), striking the worker and work basket below. The lower jib attachment subsequently failed due to the impact and the jib came to rest on the front wheel fender and the ground. The worker died on the scene due to head injuries.

CAUSES OF EVENT:

Upon investigation, it was discovered that one of two U-bolts in the upper jib attachment was broken sometime prior to the incident. This damage was not identified during the annual, pre-mobilisation, monthly, or daily inspections of the crane.

CORRECTIVE ACTIONS:

- Inspection criteria for crane jibs and jib attachment mechanisms have been developed and incorporated into monthly inspection form. Sites must incorporate the updated monthly inspection form into site-specific HSE plans.
- Crane manufacturer and the 3rd party crane certification provider were notified of this incident and the root cause.
- Inspections of other equipment, provided by the same crane service contractor, to be carried out. Sites to verify these inspections have been completed including the jib and jib attachment mechanism.
- Sites to verify that crane service contractors are conducting thorough inspections of crane equipment.
- Sites to share this alert with crane operators and riggers onsite.
- Communicate the importance of conducting detailed daily (pre-use) inspections and notifying supervisors of any damaged crane or rigging equipment, so that it can be removed from service and/or repaired by a qualified party.

RELEVANT LEGISLATION:

- **Driven Machinery Regulation 18.** Lifting Machines and Lifting Tackle; - sub regulation (5) The user shall cause the whole installation and all working parts of every lifting machine to be thoroughly examined and subjected to a performance test, as prescribed by the standard to which the lifting machine was manufactured, by a person who has knowledge and experience of the erection and maintenance of the type of lifting machine involved or similar machinery and who shall determine the serviceability of the structures, ropes, machinery and safety devices, before they are put into use following every time they are dismantled and re-erected.....