

To: KCA DEUTAG Drilling, Land Operations
Cc: KCA DEUTAG Ltd., Director Techn. Support Services for information
From: HSE Department, QS

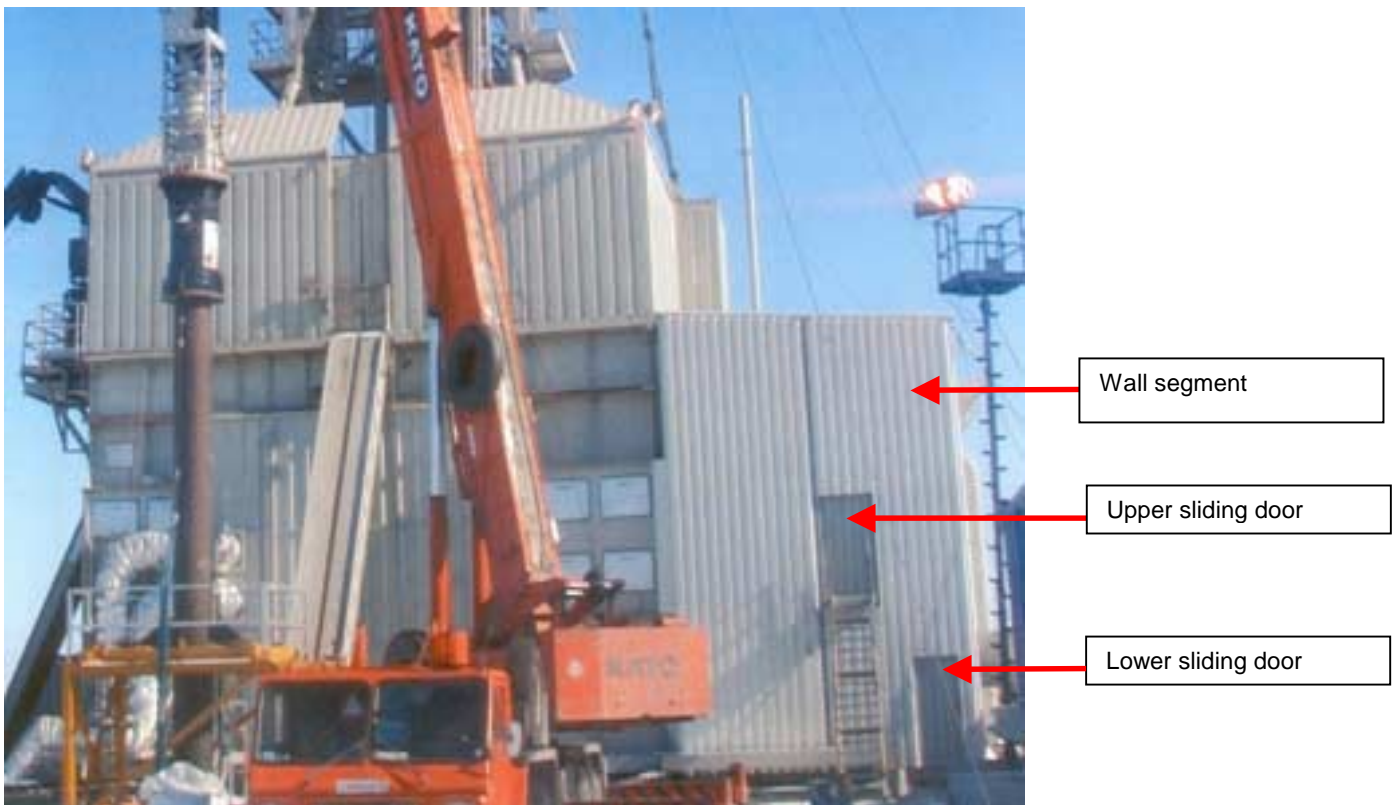
TOPIC: Fatality due to dropped sliding door

Incident description:

On one of our rigs a fatality occurred. During winterisation of the rig the shaker house had to be installed. The first wall segment was lifted by crane in a upright position. Shortly after having parked the wall segment, the upper sliding door (weight 95 kg) moved and dropped out of the rail, fell down from a height of 3,15m and hit the rigger in the neck before it finally dropped on the ground and covered the victim's body. Due to the heavy impact, the victim died shortly later, although the rig doctor tried to resuscitate for more than one hour.

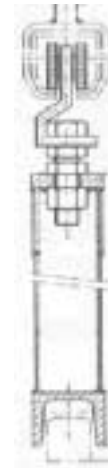
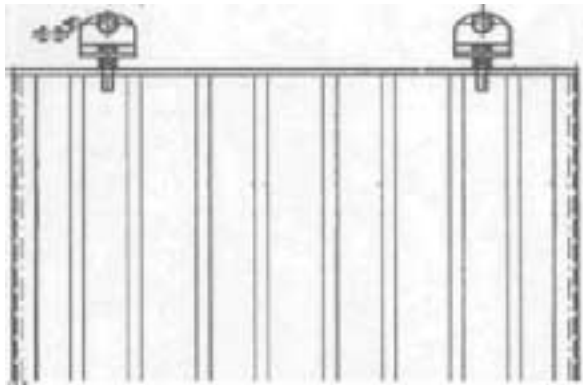
Incident cause:

The sliding door was not secured and the rail had no stoppers at the end.





Sliding door rail



Corrective actions:

- All sliding doors have to be inspected immediately of the existence of proper end stoppers in the rails.
- All existing sliding door variations on KCA DEUTAG rigs have to be reviewed for the existence of a proper stop and fixation systems. A solution for a stopper could be to drill a hole into the rail and install a bolt with a self-securing nut (see picture below).
- During transportation and installation all doors have to be properly secured.
- Before equipment is lifted it has to be checked that the doors or other loose equipment is secured.
- Prior non-routine installation or lifting operations a JSA has to be made.
- The stop system must always be in place, not only when the door is installed, but also during installation or transportation.
- Ensure, that all KCA DEUTAG sub contractors are familiar with the relevant KCA DEUTAG Work Instructions and Standards, and that these are followed accordingly.



End stopper in the sliding door rail as modified at T-2000

25. August 2004

Heinz de Vries, HSE-Engineer

NOTE: THIS SAFETY ALERT HAS TO BE POSTED ON NOTICE BOARDS ON ALL DRILLING AND WORKOVER RIGS OF KCA DEUTAG DRILLING AND DISCUSSED WITH CREWS IN THE WEEKLY SAFETY MEETINGS.

BMS documentation advice:

The contents of this alert needs to be amended in the BMS-Documentation:

yes

no

Doc. No. ____RCWI _____by (Department QS) within 3 months time.