

INCIDENT CATEGORY

- Near Miss Incident
- Incident with Damaged to Properties, Equipment and/or Environment
- Incident with Injury (Accident)

WHERE AND WHEN

Location of Incident	Date of Incident	Time of Incident
PT Bintan Offshore	28/02/2007	11:20 Hrs (SIN) / 10:20 Hrs (IND)

PARTIES INVOLVED

Company/Trade Caused the Incident	Company/ Trade Affected by the Incident
Tat Hong Plant Leasing Pte Ltd	Crane Operator

No. of People Injured	Witness
1 (Deceased)	TBA

PEOPLE INJURED

Name of Injured Person	Company / Trades	Designation
TBA	Tat Hong	Crane Operator

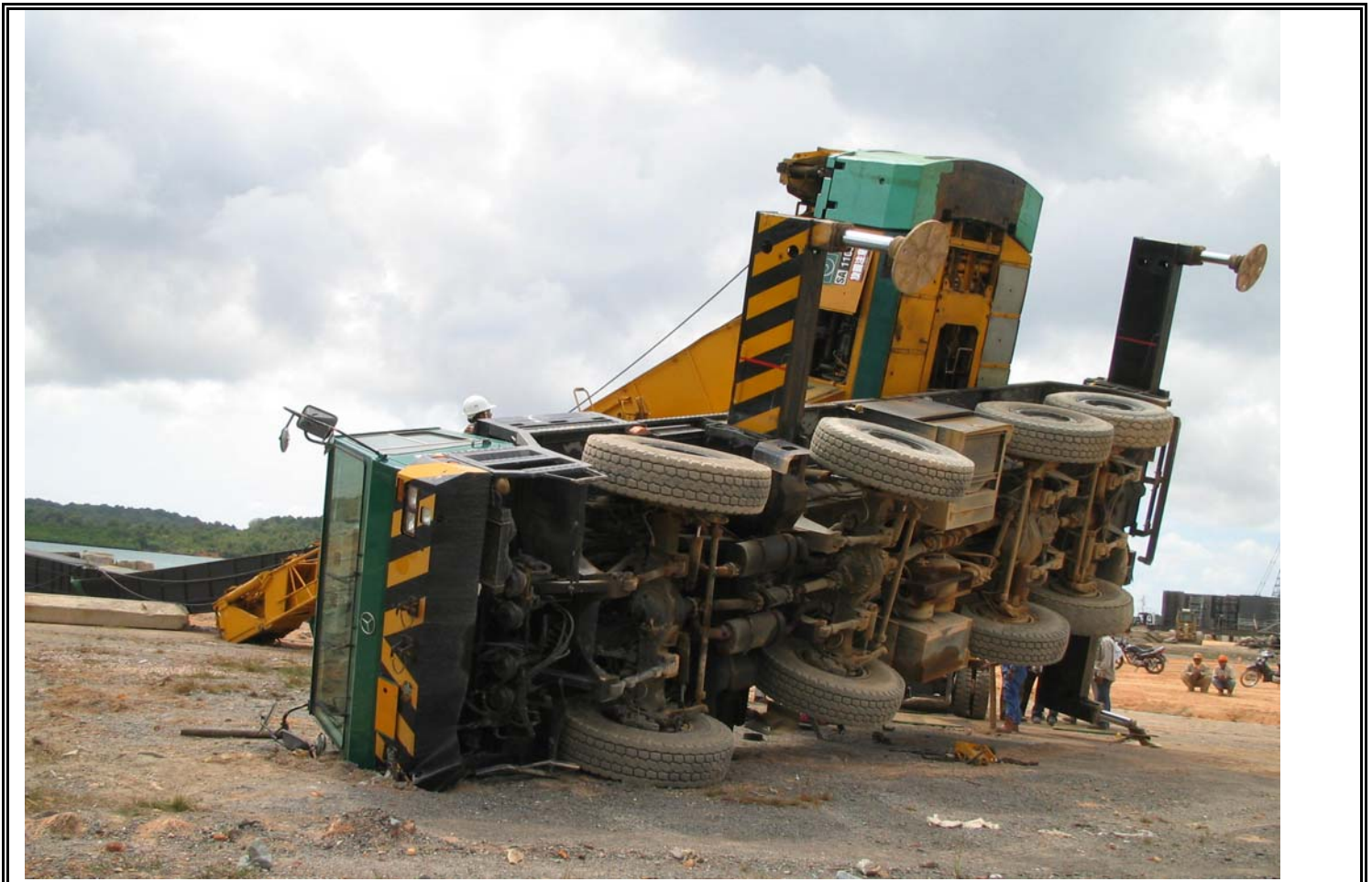
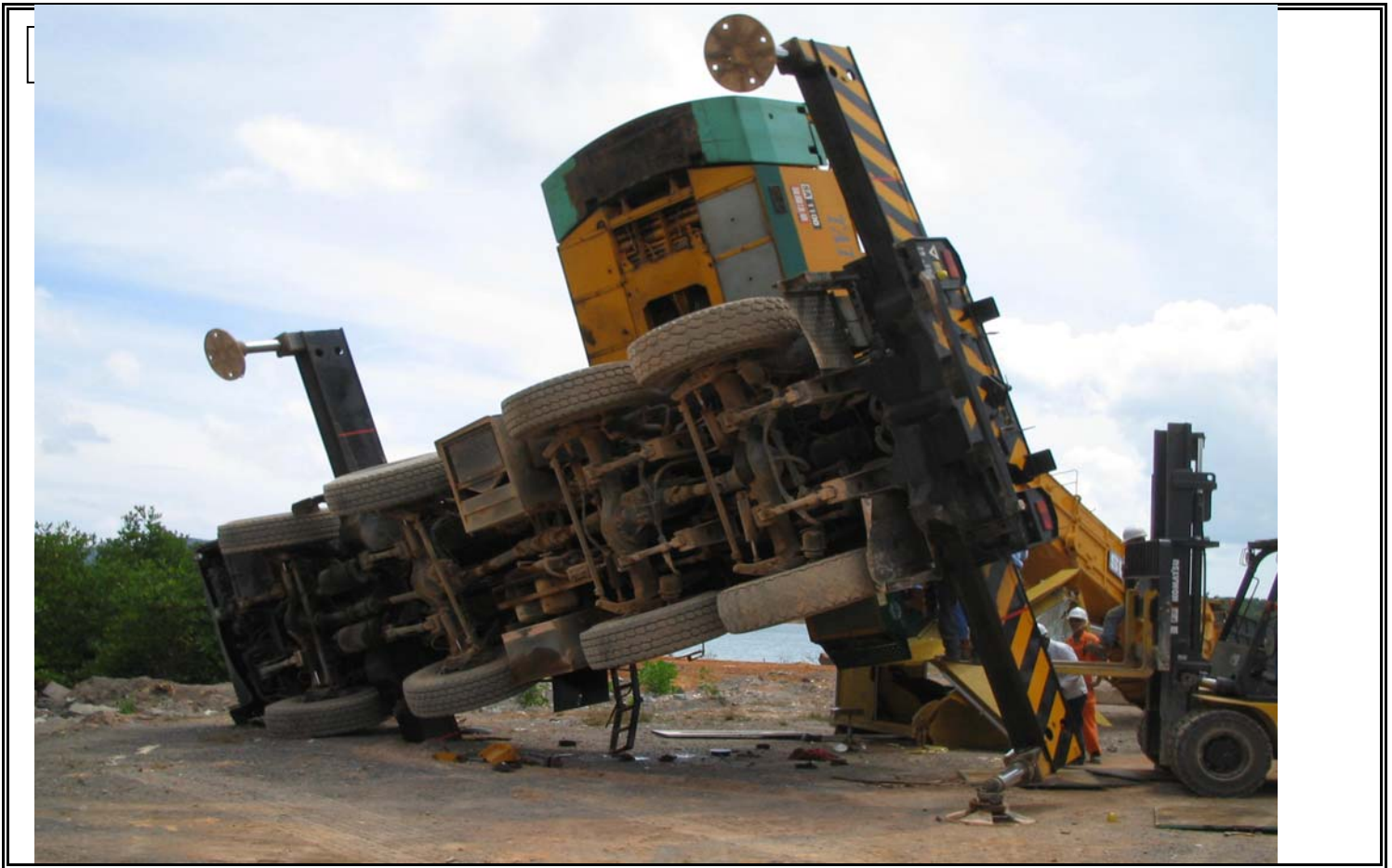
WHAT HAPPENED?

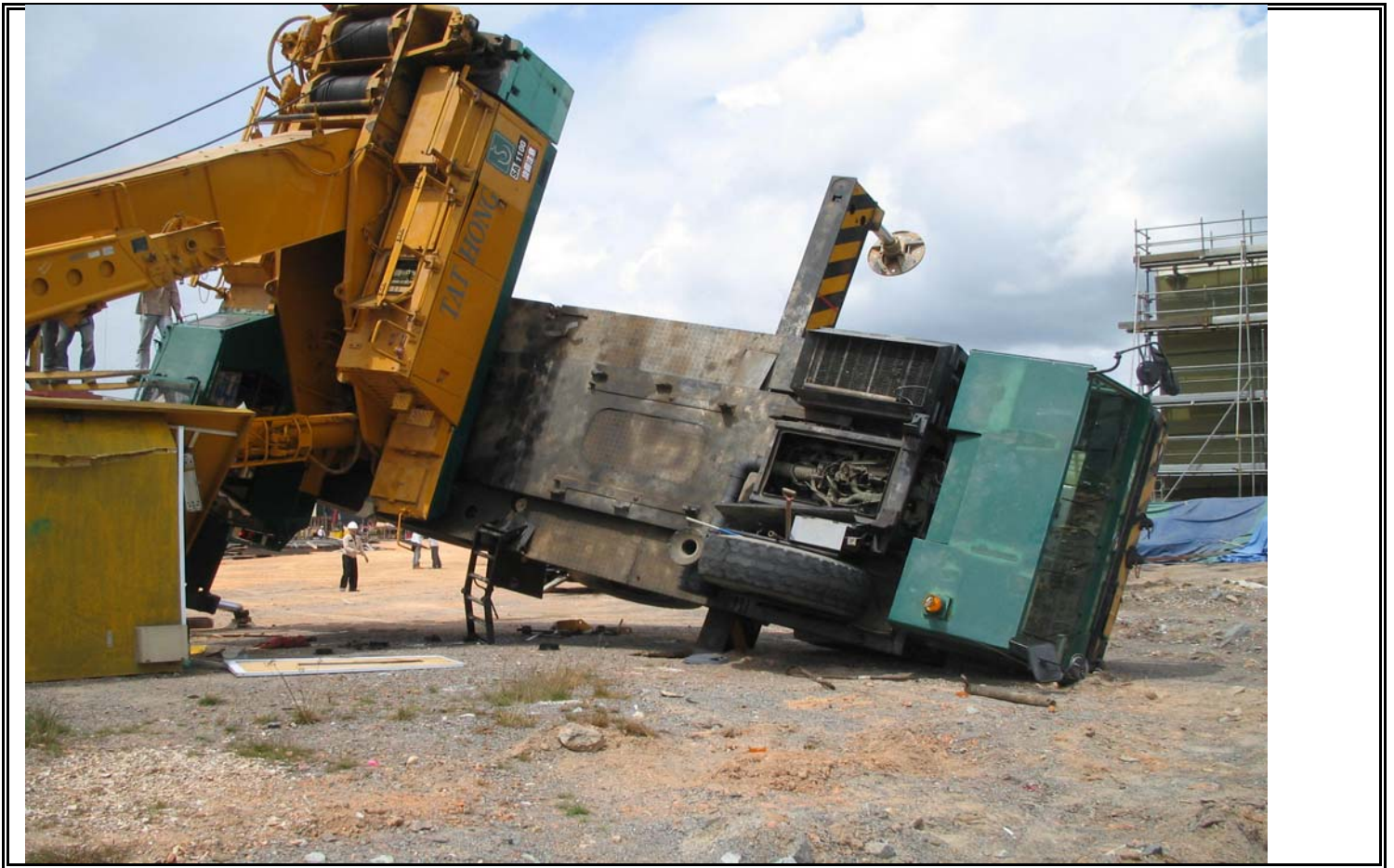
At the time of the incident, the crane operator was operating a 100ton mobile crane when it toppled over to its side during the lifting for the civil and development work.

The initial site investigation showed that the loose base plate hit the Operator when he jump from the cabin. The operator pass away on arrival at the hospital.

REPORTED BY

Reported By	Designation	Reported Date
Derek Sim	HSE Manager	28/02/2007





P



P

